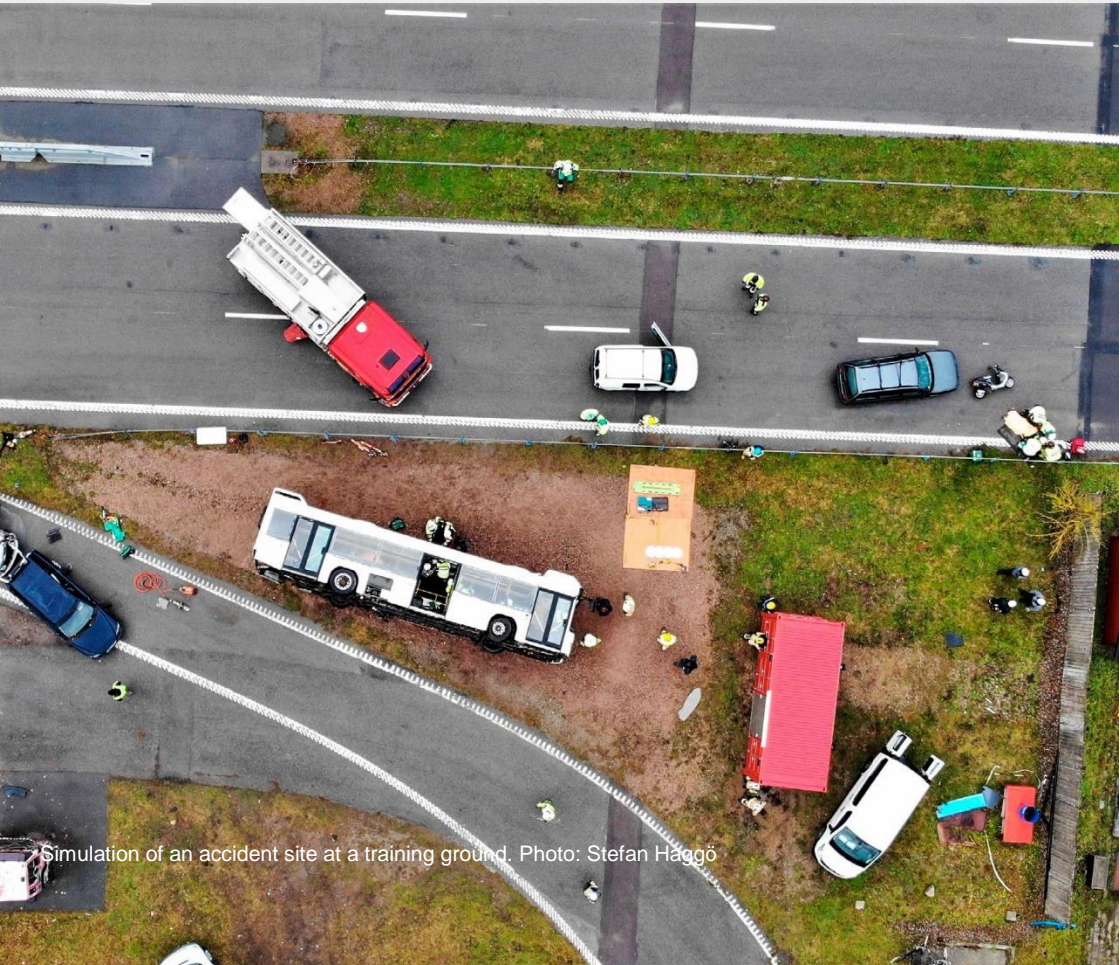




Swedish Civil
Contingencies
Agency

MSB's Real world testbed



Simulation of an accident site at a training ground. Photo: Stefan Haggö



Photo: Lotta Vylund

Background information

The real world testbed of the Swedish Civil Contingencies Agency (MSB) is the result of the project Early Responders Innovation Arena (ERIA). The project was implemented in 2017 — 2020 with funding from Vinnova's call for proposals *Verklighetslabb inom offentlig verksamhet* [Real World Testbeds in the Public Sector].

In MSB's real world testbed, innovators, researchers, emergency services and others active within the field of civil contingencies, together with educators and students, are able to test and investigate the methods, processes and technologies of the future under realistic and safe conditions.

Thanks to collaboration, the real world testbed contributes to the common good and to enhancing Sweden's innovative capacity.

What is a real world testbed

Real world testbeds are easiest to describe as locations or contexts in the user's everyday life where different substitutes, developments and innovations can be tested and evaluated.

A real world testbed could be an office, a street or a classroom. The real world testbed makes it possible to conduct tests under realistic conditions, while also allowing risks to be controlled. MSB's real world testbed is based on the agency's education and training environments in the MSB Colleges Revinge and Sandö. This is where we train the fire and rescue services, emergency services personnel and crisis managers of the future.

Real world testbed – a type of testbed

A real world testbed is one of several terms used to describe testbeds that are integrated into core activities. That means that premises, equipment, employees and customers are included in tests and demonstrations at the same time as normal core activities are ongoing.

Consequently, a real world testbed can also serve as a testbed for the challenges faced by society. In the Swedish context, the term *verklighetslabb* [reality lab] is used.



Testbeds and real world testbeds are one of many forces driving the innovation system forward

Why a real world testbed?

Testbeds and real world testbeds are an increasingly important part of the contemporary innovation infrastructure.

There is a need to be able to test new solutions under realistic conditions within all sectors of society. However, there are limits in terms of what can be done at an accident site or while a crisis is being managed. That is why there is a need to simulate realistic situations. The real world testbed creates simulations in virtual, realistic and real environments.

What does the real world testbed involve?

Each experiment has its own prerequisites.

To support implementation, the real world testbed has capacity within the following areas:



People and organisation

Having the courage to fail is central not only to learning but also to development and innovation. The real world testbed offers an inclusive context based on transparency, commitment and participation, in line with MSB's core values: an open, competent and proactive public authority.



Methods and processes

As each experiment has its own prerequisites, the real world testbed is flexible and adaptable. The real world testbed has expertise in evaluation and trial management as well as access to the know-how available within the organisation. The methodological support, for example templates and documented experience from tests and experiments, is developed over time and available to all.



Infrastructure

Infrastructure can be physical, virtual or consist of expertise. MSB's two training grounds have different geographical conditions and possibilities.

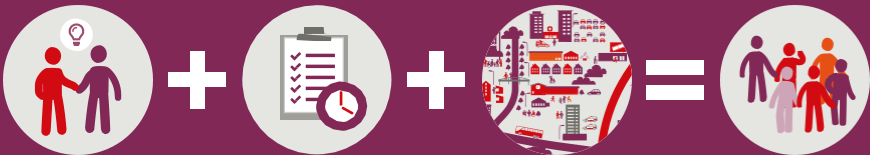
Support tools, logistics and services are available on site. The real world testbed is a working method that can be established in other locations and within the scope of other organisations' core activities.



Co-creation, value and benefit

The real world testbed supports co-creation where the working method creates added value for all participants in an experiment and is beneficial to the field of civil contingencies.

It complements other infrastructure and experimental methodology. It can be used individually or in collaboration with other testbeds, real world testbeds or experimental processes.



Who can use the real world testbed and how does it work?

The real world testbed is open to both the public and private sectors.

With guidance from experienced staff who provide support from start to finish, the real world testbed helps create a safe and secure environment where it is possible to conduct tests in the best possible way.

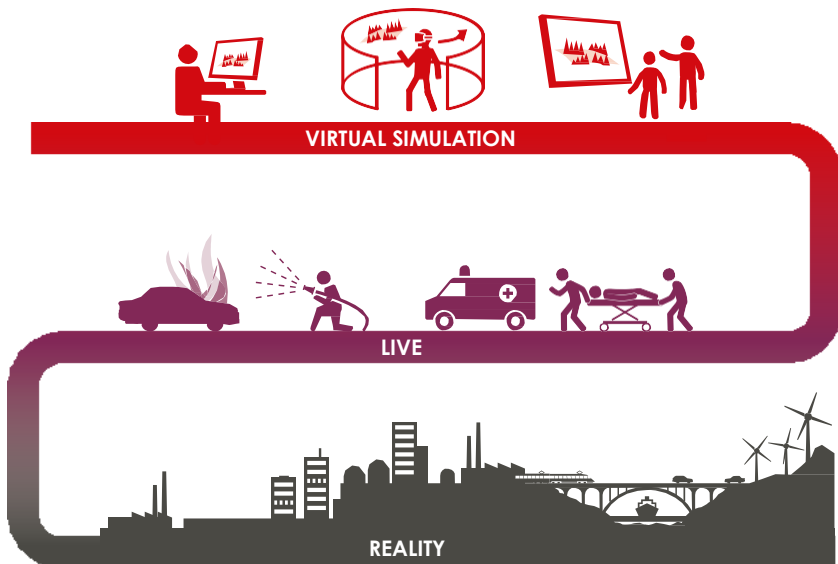
You make contact with the real world testbed by filling in an online form. Here, you state whether you are interested in experiments, methodological support or cooperation. The testbed's ability to produce a proposal is guided by the following questions:

- Is what is to be tested within a field covered by MSB's mission?
- Is the real world testbed available at the desired time?
- Is it feasible in practice? Not only in terms of available resources but also from the perspective of safety, health and the environment.

More information about the real world testbed within MSB:

You can submit an expression of interest to the real world testbed on our website www.msb.se/testbed.

There, you can also study the results of the ERIA project, previous experiment reports and methodological support.



www.msb.se/testbed



Swedish Civil
Contingencies
Agency

© Swedish Civil Contingencies Agency (MSB)
651 81 Karlstad Tel +46 771-240 240 www.msb.se
Publ. no. MSB1812 - July 2021