

United States Fire Administration



Technical Report Series

Detroit Warehouse Fire Claims Three Firefighters



Federal Emergency Management Agency



United States Fire Administration
National Fire Data Center

Detroit Warehouse Fire Claims Three Firefighters (March 12, 1987)

Investigated by: J. Gordon Routley

This is Report 003 of the Major Fires Investigation Project conducted by TriData Corporation under contract EMW-88-C-2277 to the United States Fire Administration, Federal Emergency Management Agency.



Federal Emergency Management Agency



**United States Fire Administration
National Fire Data Center**

DETROIT WAREHOUSE FIRE CLAIMS 3 FIRE FIGHTERS

A massive fire destroyed two large warehouse complexes and resulted in the deaths of three members of the Detroit Fire Department on March 12, 1987. The circumstances were particularly unusual in the fact that the fatalities resulted from two separate incidents, in different buildings, almost 3 hours apart. The manner in which the fire conditions changed very rapidly, resulting in one fatality and several injuries, is also unusual and could easily have resulted in several additional fire fighter deaths.

The Detroit Fire Department has determined that this fire resulted from an act of arson and a suspect has been charged with 3 counts of homicide. This report does not address the cause and origin aspects of the investigation. It is intended to describe the situation that was faced by the forces involved in fire suppression operations and the circumstances that resulted in the fatalities.

This report is for informational purposes only.

The fire scene was approximately two miles northwest of the downtown business area in a warehouse district, one block from the Detroit Fire Department Training Academy. It involved two adjacent warehouse complexes, each constructed in several phases between approximately 1900 and 1920. The buildings in the north complex were abandoned, while the south complex was occupied by an operating paper products distributing company. The two complexes were separated by an entrance alley, approximately 20 ft. wide, that provided entry to a large yard area. This was the only access to the yard with the other sides blocked by buildings, railroad tracks and retaining walls.

NORTH COMPLEX

The north complex consisted of an L-shaped 3-story warehouse, with full basement, facing the frontage road of I-96, attached to a 4-story warehouse on the northeast corner of the complex. A fenced-in vacant lot on the northwest corner of the property was covered with old tires.

The 3-story buildings were heavy timber construction with numerous vertical openings for freight elevators, conveyors and stairs. The front section was 190 ft. x 90 ft., divided down the middle by a fire wall. The section extending east was 300 ft. x 50 ft. With an intermediate fire wall at the mid-point. Many of the fire doors were missing or damaged, negating any effective horizontal or vertical separations in this part of the complex. The 4-story section was 230 ft. x 100 ft. constructed of reinforced poured-in place concrete. The buildings were separated by a covered shipping area, approximately 20 ft. wide and spanned by 3 crossover bridges. A railroad

siding, on top of a concrete viaduct, ran along the south side of the 3-story section at the second floor level.

The buildings had been protected by automatic sprinklers, but the system was inoperative and had been partially dismantled, including removal of the sprinkler heads and the elevated storage tank.

The 3-story section was formerly occupied by a wiping Cloth distributor and was left heavily stocked when the company went out of business. The contents included rags in bales and crates, in addition to piles of discarded clothing and materials. The bales were described as 5 ft. in diameter and up to 8 ft. tall, bound in burlap. Some of these rags may have been oil soaked, adding to the intensity of the fire and rapid fire spread.

The 4-story building was previously used by a division of the same company that dealt in used rags and other bulk items. It was also abandoned, fully stocked with combustible contents. Efforts to keep the abandoned property secured had been unsuccessful and transients were known to frequently occupy the buildings.

Fire companies in the area were aware of the risk and had conducted several familiarization tours of the buildings. During these tours, the hazards of open passages between floors had been noted and firefighters had moved contents to cover several floor openings they considered hazardous. At least one fire had occurred previously in the buildings and fire fighters anticipated another, sooner or later. Many of the personnel responding on the first alarm had toured the building in the previous month.

The property had been abandoned in 1982 and came under state control for back taxes. The City of Detroit had awarded a contract for its demolition and the contractor was scheduled to begin work within a few days after the fire.

SOUTH COMPLEX

The south complex was occupied by a paper products distribution company. This section included 3-story warehouse sections and additional sections of 1 and 2 stories, forming a triangle with frontages of 320 ft. along the I-96 access road, 300 ft. facing the yard area and 400 ft. along the railroad embankment to the south. The railroad tracks coincided with the 2nd floor level on the south side.

The front of the paper company's buildings had been covered with a metal facade, obscuring the age and complexity of the structures, but these factors were plainly visible from the sides and rear. The construction included steel frame and heavy timber sections, divided by several fire walls and protected by automatic sprinklers. The contents included paper and plastic products, including packing materials and consumer goods.

Examination of the scene, after the fire, reveals that the brick construction in both complexes was of inferior quality, presenting a high risk for early collapse. The brick work included many irregularities and no visible reinforcing, with evident gaps between the double and triple courses of brick. The construction had taken place over several years, resulting in complicated arrangements of buildings and many construction features that could not be seen from the exterior.

The fire was reported in the abandoned section of the complex at 1506 hours on March 12, 1987. A first alarm assignment consisting of 3 engine companies, one ladder company, a squad and Battalion Chief was dispatched and the first due ladder company arrived within 2 minutes. Ladder 9, responding from its quarters at the Training Academy, one block away, had a view of the north and east faces of the buildings as they approached. They arrived, reporting a small amount of light smoke showing from the southeast corner 3rd floor windows.

The first arriving companies had to force entry through the front doors and then made their way via an unenclosed interior stairway to the top floor. At this level they found at least two small fires in trash and rags toward the south end of the floor area. They went to a window and dropped a rope, intending to pull a 1 1/2 inch nose line up to the 3rd floor. The fire did not appear to be threatening at this point and the crews anticipated a quick and easy job of extinguishment.

Very suddenly, the conditions on the 3rd floor changed dramatically. A heavy front of smoke and flame rolled over on the interior crews, forcing them to abandon their positions and retreat toward the stairs. One fire fighter, looking through a doorway to the adjoining sections, reported a mass of flames approaching rapidly. There are indications that an additional fire, possibly set on a lower floor toward the middle of the east-west wing, had reached the flashover stage and was rapidly engulfing the entire 3rd floor. A total of 8 fire fighters were on the 3rd floor when the flashover occurred, forcing them to crawl back toward the stairway. Two managed to dive down the stairs and escaped with hand and facial burns and other injuries. One went out a window to an aerial ladder, but 5 could not reach the stairs and were trapped by the flashover.

The firefighters found their way to windows in the northwest quadrant of the building and called for help. One lieutenant lost his grip while hanging out a window and fell, striking a ledge at the 2nd floor level and landing head first on the street below. Other firefighters initiated CPR and transported him in a fire investigator's sedan to a hospital where he was pronounced dead on arrival.

While a ground ladder was being raised, a second firefighter fell, striking a large telephone line and landing on the street with a fractured elbow and shoulder. Two were rescued with an extension ladder from a front window while a master stream was used to protect another, hanging onto the sill of a window around the corner. To reach him, a snort ladder had to be used to scale a chain link fence into the vacant yard and a 45 ft. extension ladder was passed over and raised.

All of the firefighters were wearing full protective clothing, including coats and helmets that complied with NFPA standards, leather gloves and 3/4 length rubber boots. Most wore SCBA's on their backs and four were able to don their face pieces as they crawled toward the stairs, including the two who fell. Several of the firefighters received 1st and 2nd degree burns to their hands, wrists, thighs and necks.

Exposure Priority

When conditions began to deteriorate, the Battalion Chief immediately called for a 2nd Alarm at 1519 hours. This was followed by a 3rd Alarm at 1522, a 4th Alarm at 1530 and a 5th Alarm at 1538 hours. Requests for additional companies escalated the response to the equivalent of 7 alarms as flames rapidly engulfed the entire 3-story building. The Deputy Fire Chief, responding on the 3rd Alarm, assumed command and attempted to deploy companies to confine the fire. A ladder company, assigned to set up a master stream at the east end (Lawton Street) of the building could not operate in an effective position because of the imminent danger of wall collapse, while companies could not use the alley entrance to the yard because of the collapsing wall at that end of the fire building. A railroad viaduct at the 2nd floor level severely restricted access on the east side of the fire building and handlines had to be stretched by hand into the yard area, over a retaining wall and fence, to apply water on the south side.

As the flames raged on the heavy fuel load of the rag warehouse, the exposed paper warehouse was quickly ignited. Moments after the rescue of the trapped firefighters was completed, flames were visible under the eaves and in the exposed windows, at the alley opening. Companies were sent to the roof and interior to attempt to stop extension with handlines, while elevated master streams were set-up to cover the exposure from the front, including a tower ladder set-up on the freeway off ramp in front of the complex.

This holding action was successful in the front part of the building, but flames soon overwhelmed the sprinkler system and broke through the roof of the next section to the east. The portions of the warehouse that were beyond the reach of elevated streams received a heavy exposure from radiant heat, flying brands and internal extension, resulting in full involvement of the northeast section of the paper products warehouse. Handlines and portable master stream devices were moved onto the railroad right-of-way to attack the growing fire and the Deputy Chief ordered all personnel out of the warehouse, because of the danger of structural collapse.

With 3-story warehouses now fully involved around three sides of the yard, the operation went into a long duration defensive mode. The unusually high fuel load in both complexes created intense thermal columns and showered the area to the east with flying brands. Several small fires were handled by engine companies and citizens with garden hoses, up to 3 blocks down wind.

STRUCTURAL COLLAPSE

Approximately 2 hours into the defensive battle, companies working along the east side of the paper warehouse began to approach the burning 3-story section over the roof tops of the uninvolved 2-story sections. Near the middle of the building they found an area where the roof had burned off and the 3rd floor contents were partially burned. It is believed that the fire in this area had been controlled by an elevated stream, operated from the front of the building. This section was separated by a fire wall from the fully involved section to the east.

Members of two companies made their way from the adjoining rooftop into the 3rd floor area where they picked up and extended handlines that had been abandoned earlier. Three members of one company were working near a fire wall, overhauling debris, when a section of parapet collapsed without warning at 1758 hours. This wall was free standing at the time, since roof structures on both sides had burned away and an intense fire was burning on the other side.

Two members were caught by the falling wall, which collapsed the 3rd and 2nd floors down into the 1st floor. and were trapped in a pile of debris approximately 1.2 ft deep in the unburned ground floor area. The remaining member of the company called for help and made his way downstairs to begin digging for the victims. He was joined by numerous other firefighters as the word of men trapped was announced over the fireground radio channel.

The Deputy Fire Chief organized a rescue effort with crews digging out bricks and debris by hand. This effort actually took place inside the ground floor warehouse area and efforts to limit the number of personnel exposed to the danger of further collapse were hampered by the urgency to rescue trapped comrades. While this operation was in progress, the application of water was severely curtailed, to avoid causing further collapse of the structure. An additional assignment of fresh companies was called to assist in the rescue operation.

The rescue effort took more than one hour, resulting in the recovery of the bodies of a 58 year old lieutenant and 20 year old probationary

firefighter. At the time of the body recovery, the Deputy Fire Chief was contemplating removing all crews, because of deteriorating fire conditions, and as soon as the operation was completed the building was abandoned.

By this time the fire had extended into most of the Z-story sections of the paper warehouse and total destruction was unavoidable. All crews withdrew to safe positions and master stream operations were continued for almost 24 hours. Late on the following afternoon, the contractor who held the demolition contract was called in to level the unsafe walls of both complexes.

LESSONS LEARNED

1. The buildings involved in this fire were heavily loaded with highly combustible contents. The arrangement of the buildings created conditions that were ripe for very rapid fire growth and spread, particularly in the building of fire origin where the automatic sprinkler system had been rendered inoperative and fire doors and walls were compromised. These factors must be noted during pre-fire planning visits and responding companies must be prepared to deal with extremely rapid fire growth conditions.
2. Vacant buildings often present an attractive nuisance to members of society who engage in the crime of arson, either for profit or for more unpredictable motives. Where these problems exist, companies should make a priority of pre-fire planning and familiarizing themselves with access, Contents, special hazards and hidden traps that may be critical

in a firefighting operation. Efforts must also be directed toward having abandoned buildings secured or demolished as quickly as possible. The actions of an arsonist are truly unpredictable. Firefighters encountering obvious arson situations must be particularly vigilant for multiple points of origin, accelerants, and other factors that could cause rapid changes in fire conditions.

3. The contents of the rag warehouse were not only highly combustible, but also obstructed access through the storage areas and prevented firefighters from finding the stairway when the unexpected flashover occurred. When encountering conditions of this nature, the use of guide ropes or hoselines to lead the way back to an exit should be seriously considered.

4. When fighting any type of fire, the officer in command must consistently be aware of the risk to personnel, and question whether the potential results justify the risk. No building is worth the life of a firefighter and abandoned or substantially destroyed buildings do not justify risking personnel under any circumstances. This must be weighed in context, however, as it is not realistic to allow any fire in an abandoned building to burn unchecked. If manageable fires are not controlled in their early stages, they will inevitably grow to major proportions and create a much greater risk to firefighters and the community.

5. On their arrival, fire fighters encountered a situation that did not appear to present any significant danger. When the flashover occurred, they were very suddenly subjected to intense heat and flames, as well as zero-visibility smoke conditions. Those members who had their Self Contained Breathing Apparatus on their backs, had time to don their face pieces as they crawled from the danger. Those who did not have SCBA's, at least on their backs, were suddenly in extreme danger and were lucky to survive.

Whatever the situation, company officers must take basic precautions, including:

- Identifying secondary means of escape.
 - Ensuring that all personnel are wearing full protective clothing and SCBA.
 - Maintaining accountability for all crew members at all times.
 - Constantly being aware of their surroundings and changing conditions.
 - Being trained to react to unanticipated emergency conditions.
6. Large scale operations, such as this one, require strong centralized command to establish and communicate the basic strategy that will be employed and to coordinate operations. This must be supported by a fire ground organization that controls the tactical position and function of all operating units and monitors safety conditions, in accordance with the strategic plan. This requires sufficient command-level officers and effective communications to perform the essential tasks.

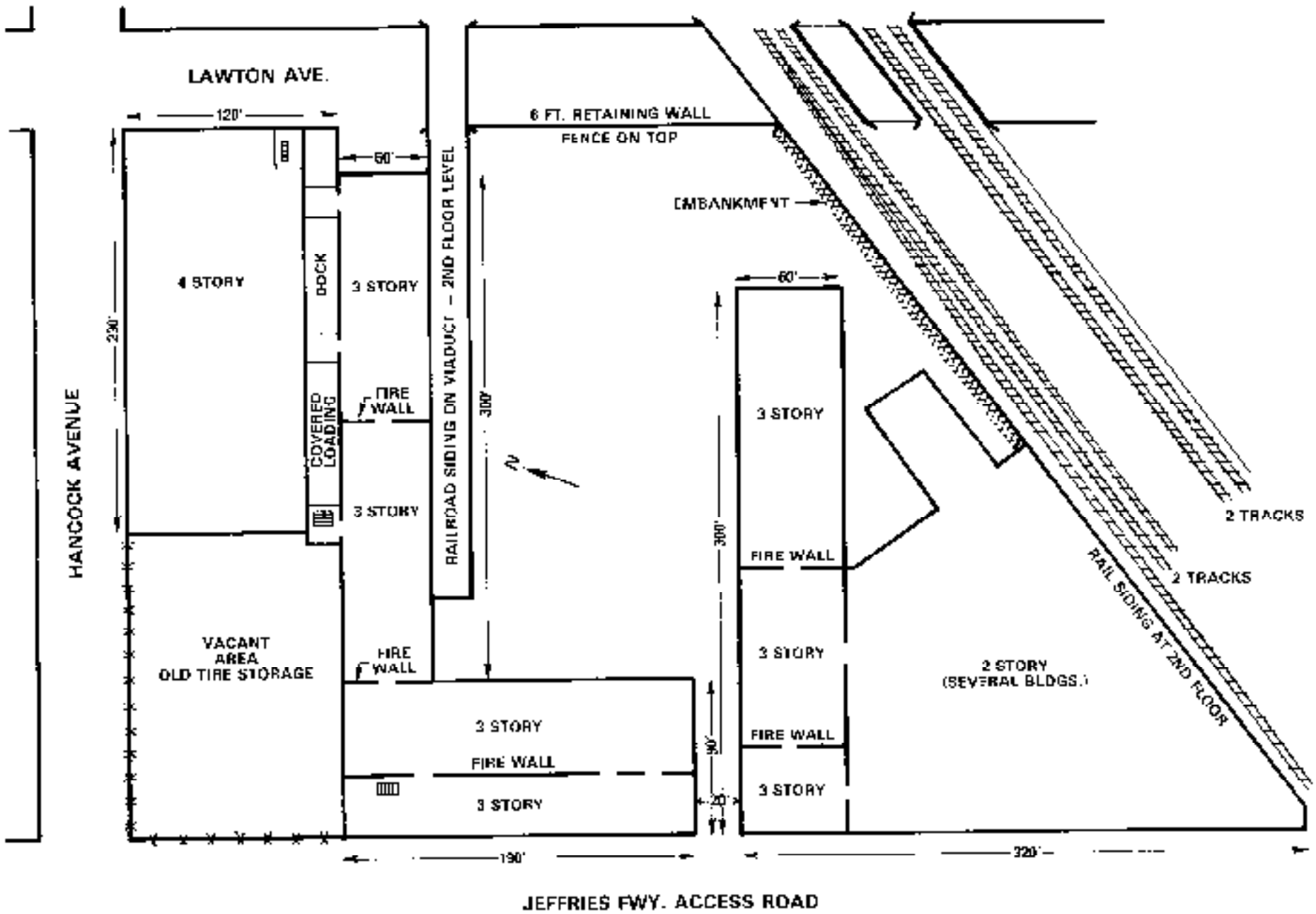
Offensive and defensive fire fighting operations must never be mixed or confused. When a fire is being managed in a defensive mode, all personnel must be aware of the strategic plan and stay out of the uninvolved area until re-entry is authorized by the officer in Command of the incident. "Free lance" operations must not be allowed.

7. The inherent structural weaknesses of a building may or may not be plainly visible. Potential weak points should be noted during pre-fire planning and inspection visits. Safety officers should be assigned to monitor the operation and to evaluate conditions as they are encountered and all personnel should be able to recognize signs of weakness or impending collapse.
8. The urgency of a rescue operation may cause firefighters to accept severe risks and to endanger themselves in large numbers. The risk of additional losses must be weighed against the chances of a successful rescue. The loss of control may escalate a tragic situation into a major disaster.

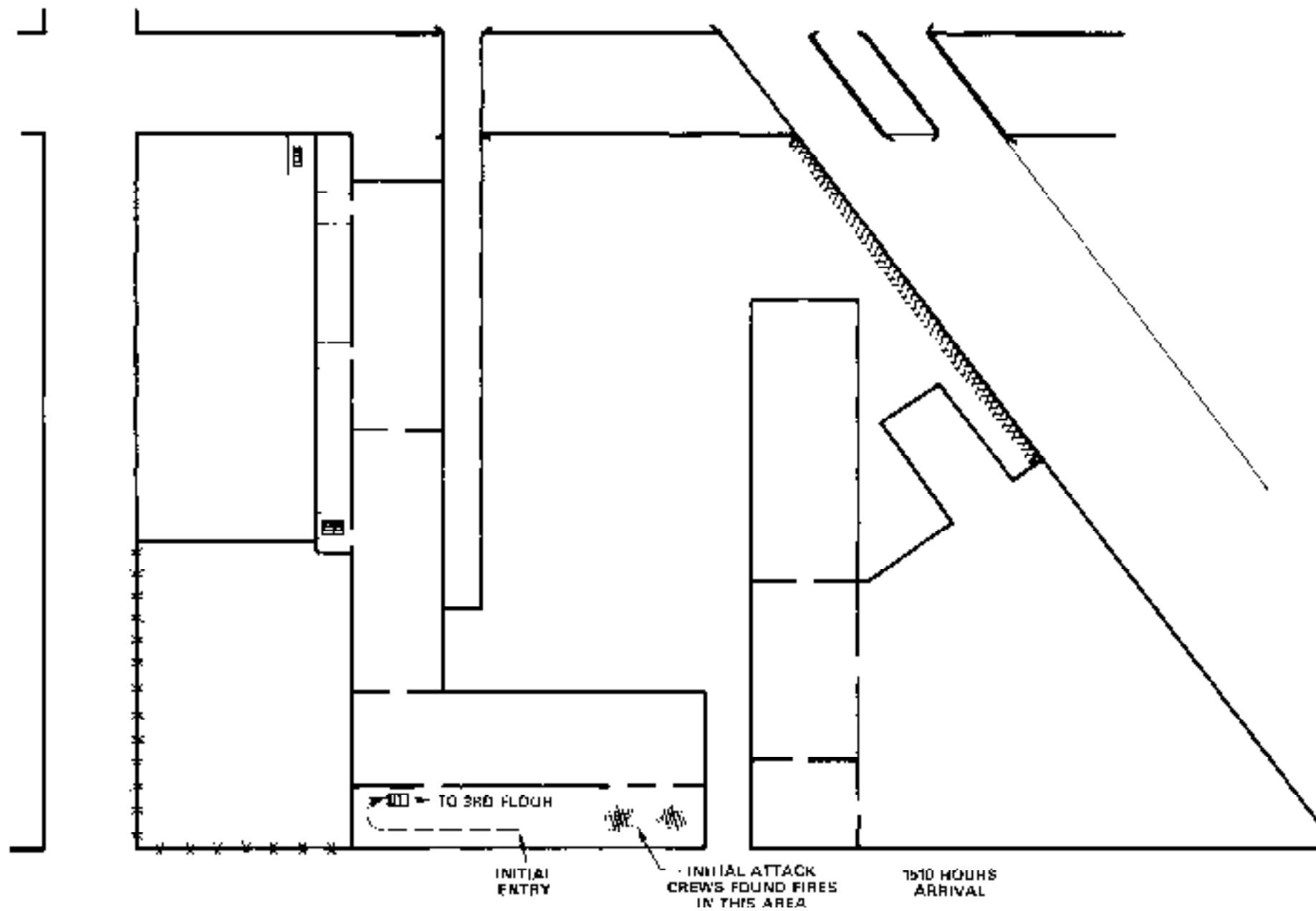
The "Lessons Learned" listed in this report should not be interpreted as criticism of the Detroit Fire Department or of any of the individuals involved in this incident. This fire presented an extremely unusual combination of circumstances that had a devastating effect on a very competent and experienced fire department. The incident involved heroic actions and tragic results that were felt throughout the Detroit Fire Department and throughout the fire service. These lessons should be taken as reminders that fire fighters must never relax their attention to basic safety procedures and must always be prepared to deal with a situation that changes from routine to critical without warning.

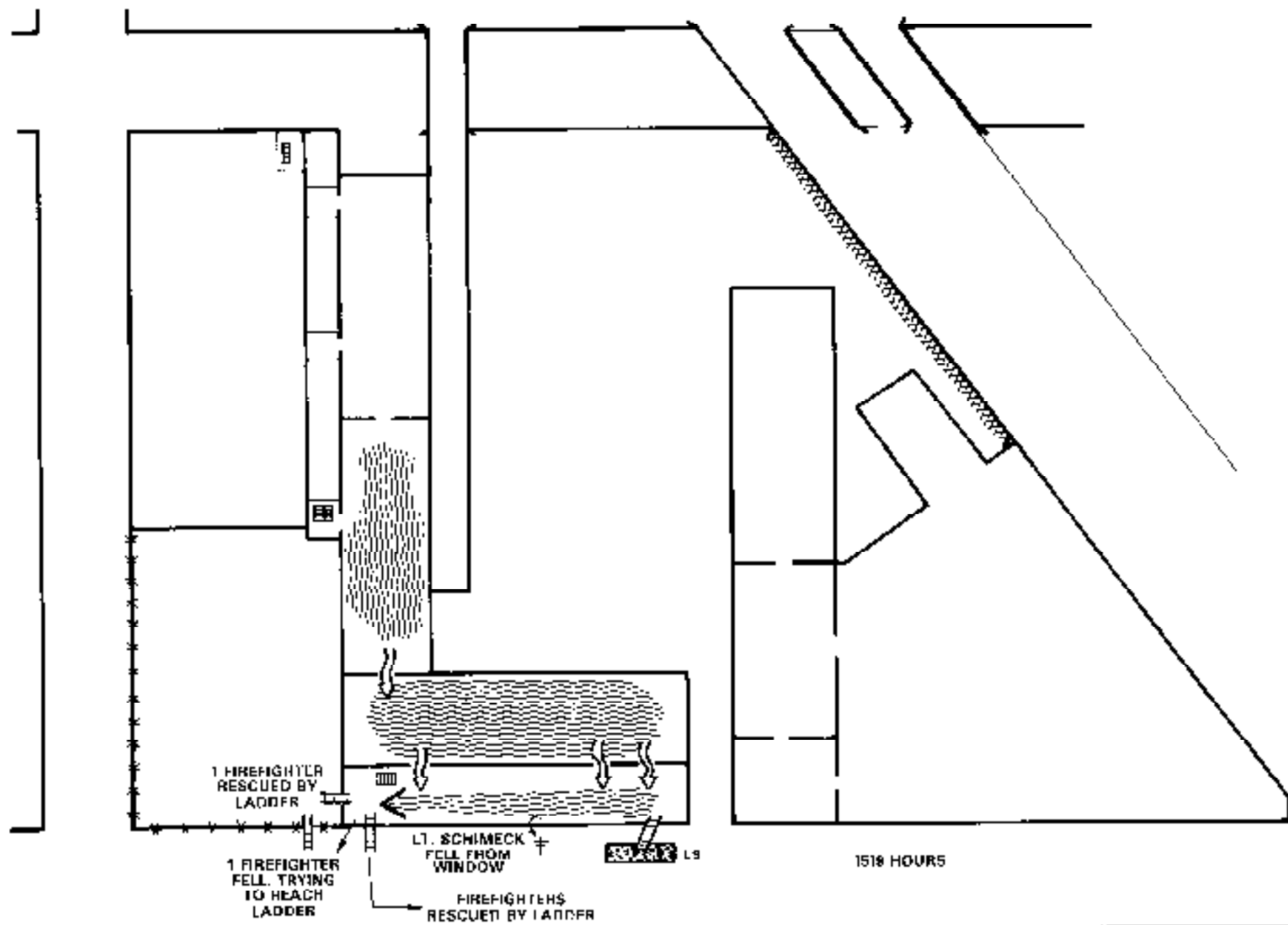
This report was prepared by J. Gordon Routley, Chairman of the Health and Safety Committee of the International Association of Fire Chiefs and by Tri-Data Corporation, for the United States Fire Administration. The cooperation of the Phoenix Fire Department in making Mr. Routley available for this project is acknowledged.

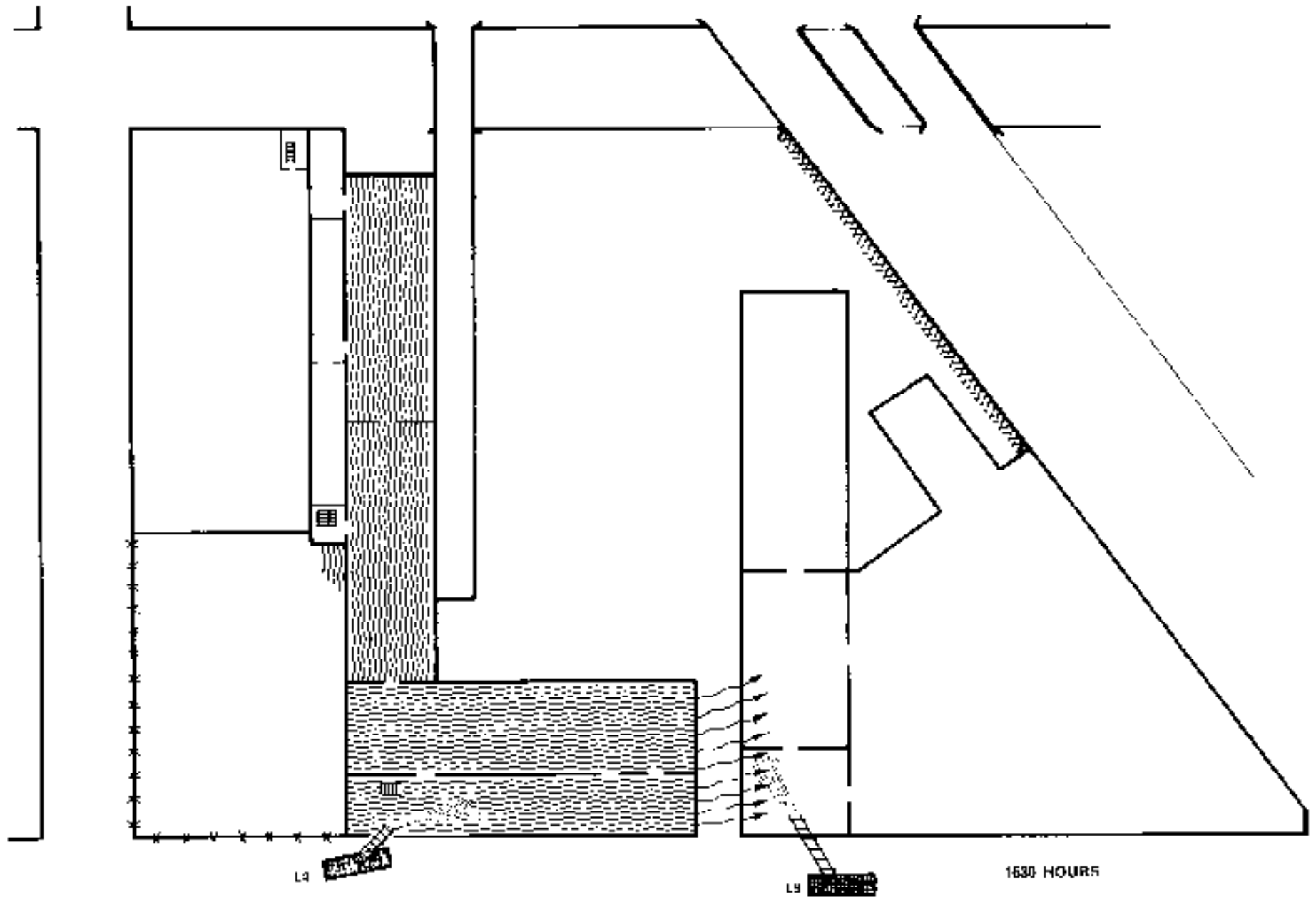
In addition, the cooperation of Commissioner Melvin Jefferson and the members of the Detroit Fire Department is greatly appreciated.

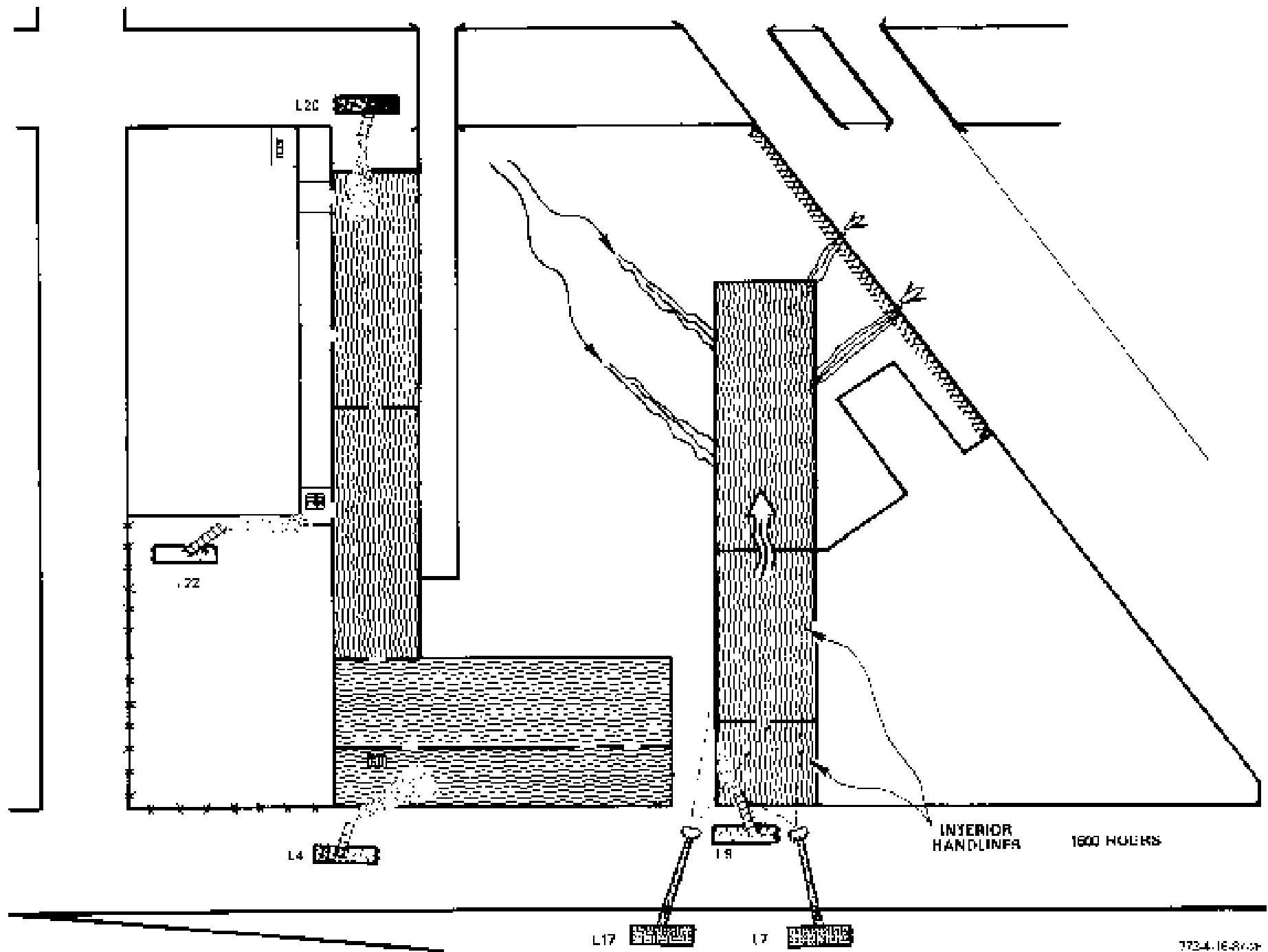


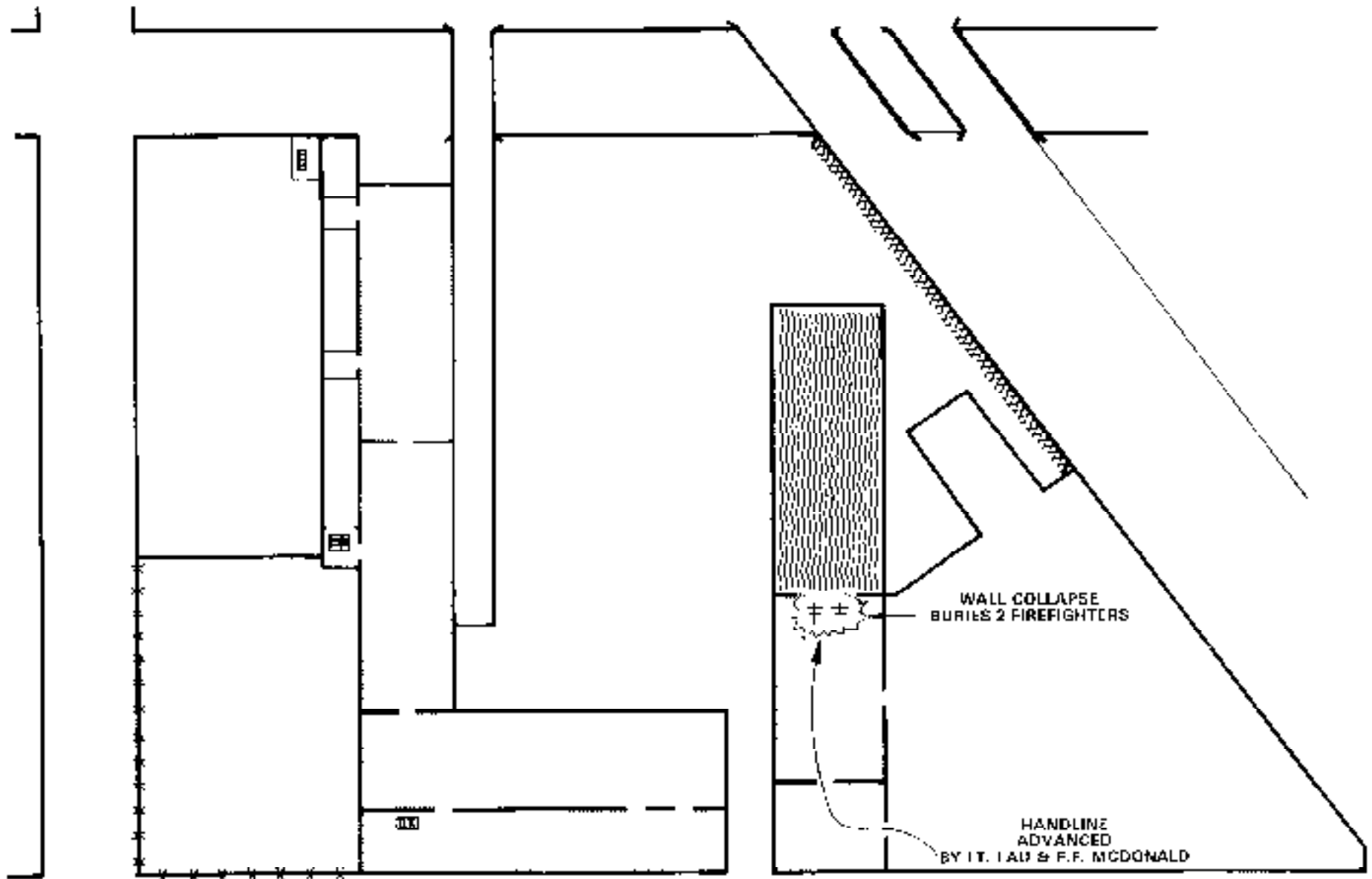
OFF RAMP



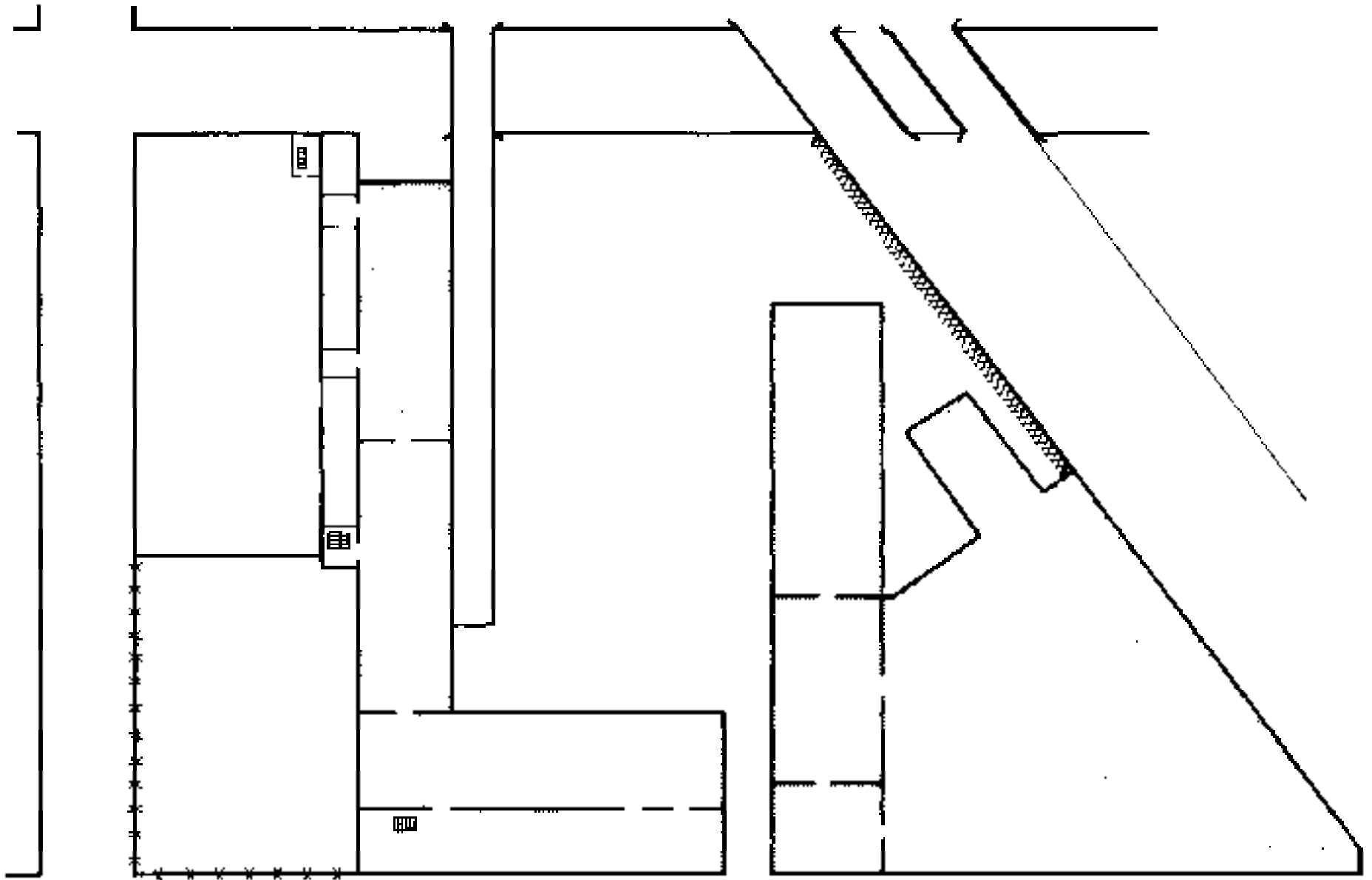








1768 HOURS



FINAL OUTCOME

PHOTO CAPTIONS

Photos 1-4

Aerial views of the incident scene - day after the fire.

NOTE: Freeway is West Exposure
Railroad is South Exposure

In photo #1, note Detroit Fire Department Training Academy - 6 story building with radio tower, left of smoke plume.

Photos 5-7

Fireground activity near N/W corner of original fire building, shortly after flashover and rescue operations.

NOTE: Ladder used to rescue trapped fire fighter.

PHOTO 5: Master stream on Engine 10 used to protect fire fighter in window prior to rescue. Also extension of flames to paper warehouse at eaves.

PHOTO 7: Fire in tires at ground level and fire spread on 2nd and 3rd floors.

Photos 8-12

Continuing fire fighting activity,, Northwest part of complex.

Photo 13

Rescue operations for trapped fire fighters. Inside ground floor of paper warehouse. Both 2nd and 3rd floors have collapsed into unburned area.

